

VSE

SIMEX
HEAVY MADE EASY



simex.it



VSE

SCREENING BUCKET

ADJUSTABLE OUTPUT SIZE

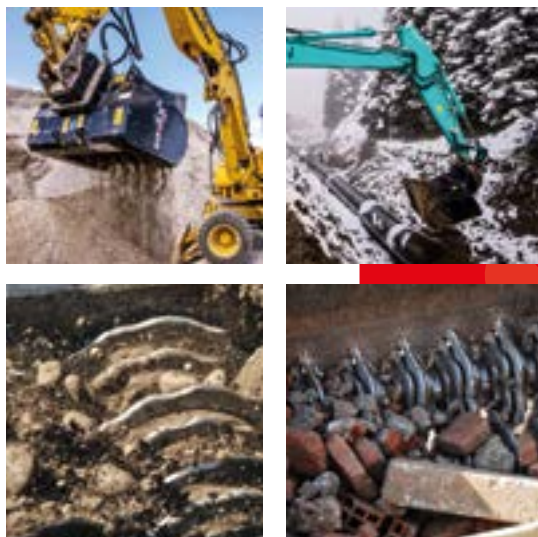
VSE 10
VSE 20
VSE 30
VSE 40



Designed for **separating different-sized materials on the work site**, Simex VSE screening buckets are unique for their **easy loading, very simple operation and high productivity**.

The exclusive Simex patent allows **rapid adjustment of output size** of the screened material in only seconds via a control in the operator cabin.

SIMEX
• patent •



ADVANTAGES

- Quick adjustment of output size
- Effective with wet material
- High productivity
- Simple operation
- Easy loading
- Easily replaceable screening tools

TECHNICAL DATA		VSE 10	VSE 20	VSE 30	VSE 40
Recommended excavator weight (1) (2)	ton lbs	8 - 13 17500 - 29000	12 - 18 26000 - 40000	16 - 30 35000 - 66000	30 - 45 66000 - 99000
Mouth width	mm inch	860 34	1100 43	1260 50	1340 53
Total width	mm inch	1220 48	1485 58	1650 65	1835 72
Bucket capacity (SAE)	m ³ yd ³	0,40 0,52	0,70 0,92	1,00 1,30	1,80 2,35
Screening area	m ² yd ²	0,56 0,67	0,80 0,96	1,00 1,20	1,36 1,63
Shaft travel	mm inch	40 1,6	40 1,6	40 1,6	40 1,6
Number screening shafts	n°	2	2	2	3
Operating weight (3)	kg lbs	965 2125	1400 3080	1845 4060	2725 6000
Required oil flow	l/min gpm	90 - 125 24 - 33	100 - 150 27 - 40	165 - 220 44 - 58	180 - 280 48 - 74
Max. required oil pressure	BAR psi	250 3600	250 3600	250 3600	250 3600

(1) The maximum operating load permitted for the excavator, when added to the weight of the standard bucket, must match or exceed the weight of the bucket at full load.

(2) User is responsible for ensuring that the equipment meets the excavator's specifications and weight requirements.

(3) Without mounting bracket.

Simex does not accept responsibility or liability for the information provided. Technical modifications may vary without prior notice.



Utilities



Quarries and mines



Demolition



Port and underwater works



Construction and building



Infrastructure



Tunneling



Agriculture and forestry



Recycling



Roadworks



Trenching



Mini-excavator



Excavator



Skid steer loader



Front loader



Backhoe

SIMEX
HEAVY MADE EASY

Simex Srl - Soc. Uninom. - Via Isaac Newton, 29-31-33 - 40017 San Giovanni in Persiceto (BO) - ITALY
VAT/P.IVA 00692551203 - F.C./C.F. 04034530370 - ☎ +39 0516810609 - 📠 +39 0516810628